

SMOKING AND CANCER RISK

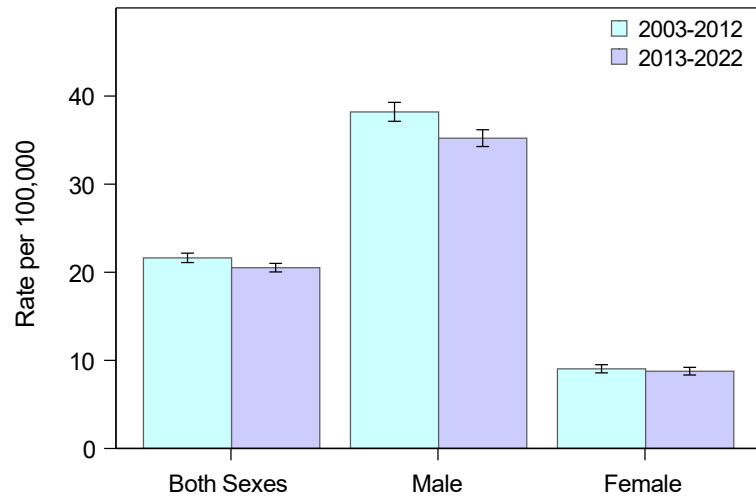
The effects of smoking on health were documented in a landmark report by the Surgeon General in 1964. Since then the devastating effect from smoking on millions of American lives continued to be documented in spite of that landmark report. According to the Surgeon General's report released in 2010, a large proportion of smoking-related deaths are due to early heart attacks, chronic lung diseases, and cancers. The report also describes the ways tobacco smoke damages every organ in the body and causes disease and death. Tobacco smoke contains chemicals that are harmful to both smokers and non-smokers. According to the Kansas Behavioral Risk Factor Surveillance System, in 2020 16.6% of Kansas adults aged 18 years and older were current cigarette smokers. Smoking causes many types of cancers, including cancers of the lung, esophagus, larynx (voice box), mouth, throat, kidney, bladder, pancreas, stomach, cervix, and acute myeloid leukemia. In this report, incidence data from 2003-2022 for Kansas residents are presented for selected smoking-related cancers including cancers of the oral cavity and pharynx, lung, esophagus, stomach, pancreas, larynx, lung, cervix, bladder and kidney.

REFERENCES

- U.S. Department of Health and Services. How Tobacco Smoke Causes Disease: The Biology and Behavioral Basis for Smoking-Attributable Disease: A Report of the Surgeon General. Atlanta, GA: U.S. Department of Health and Human Services, Centers for Disease and Prevention, National Center for Chronic Disease Prevention and Health Promotion, Office on Smoking and Health, 2010. Available from <https://archive.cdc.gov/#/details?url=https://www.cdc.gov/tobacco/sgr/2010/index.htm>.
- Kansas Behavioral Risk Factor Surveillance System, <https://www.kdhe.ks.gov/1734/Kansas-Behavioral-Risk-Factor-Surveillan>
- National Cancer Institute. Harms of Smoking and Health Benefits of Quitting Fact Sheet. Available from <http://www.cancer.gov/cancertopics/factsheet/Tobacco/cessation>.

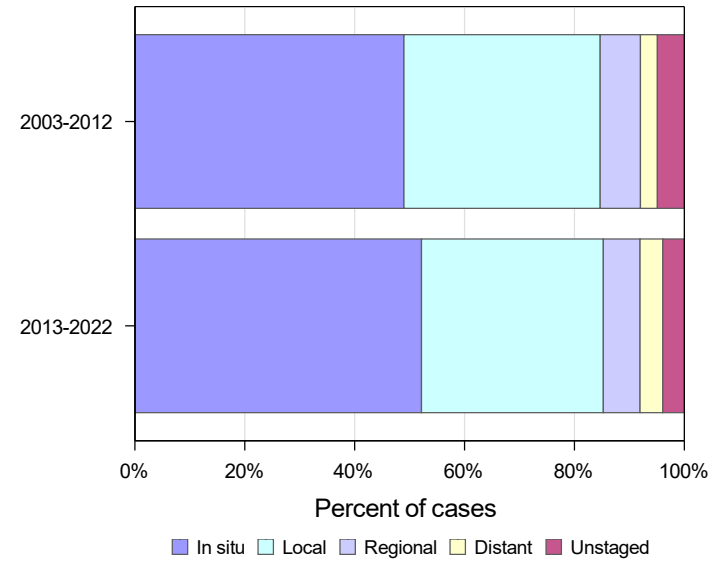
Invasive and In situ Bladder Cancer in Kansas, 2003-2022

Age-Adjusted Incidence Rates by Sex

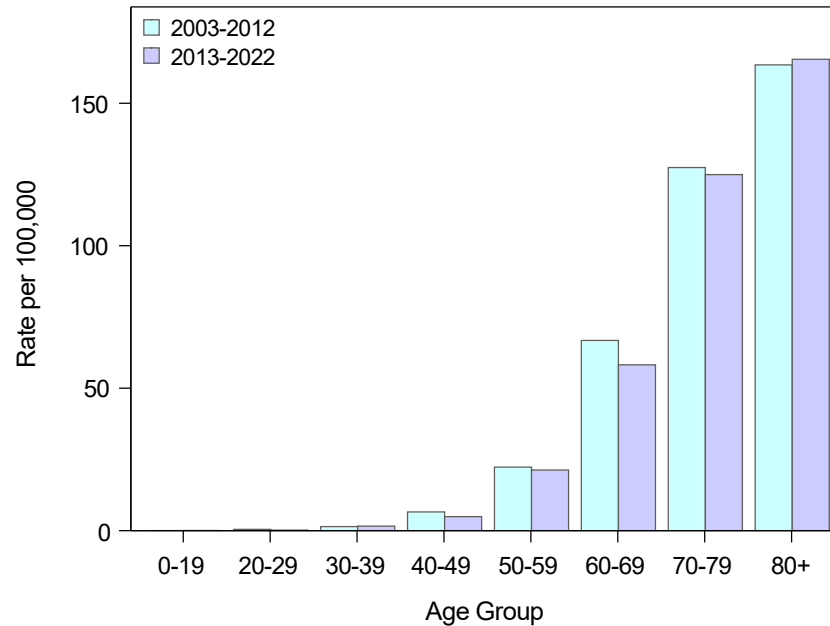


| | Both Sexes | Male | Female |
|----------------------------|------------|------|--------|
| Avg Annual Count 2003-2012 | 815 | 623 | 192 |
| Avg Annual Count 2013-2022 | 898 | 689 | 209 |

Stage at Diagnosis



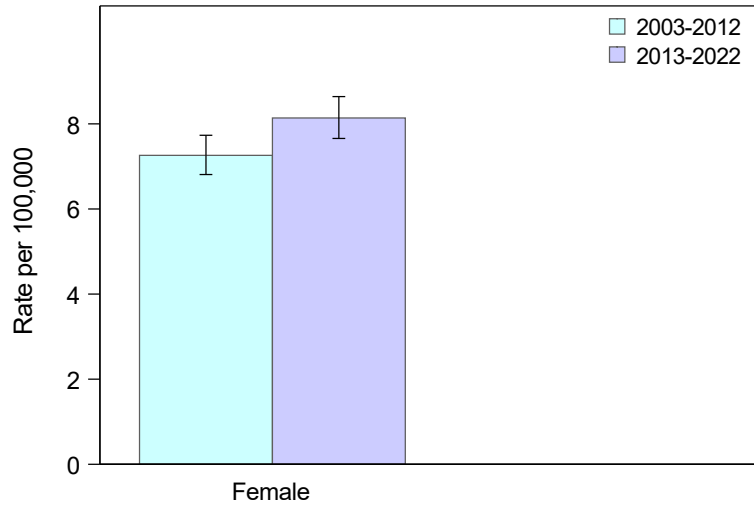
Age-Specific Incidence Rates



Rates are per 100,000 population. Age-adjusted rates calculated using the 2000 U.S. Standard Population.
Suggested citation: Kansas Cancer Registry, Smoking-Associated Cancers, 2003-2022

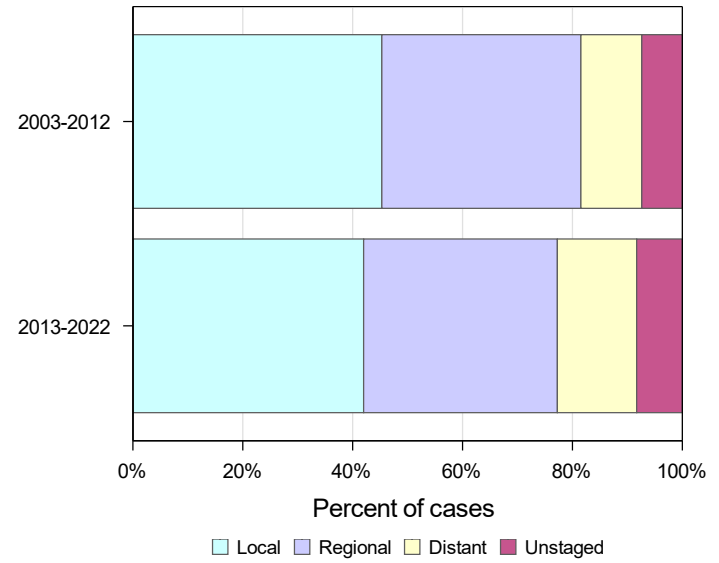
Invasive Cervix Cancer in Kansas, 2003-2022

Age-Adjusted Incidence Rates

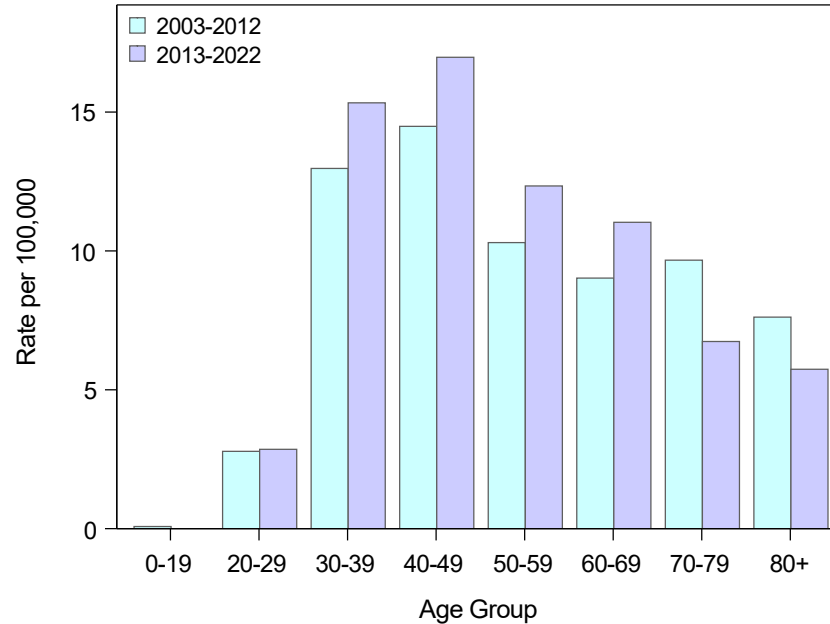


Avg Annual Count
 2003-2012: 125
 2013-2022: 143

Stage at Diagnosis



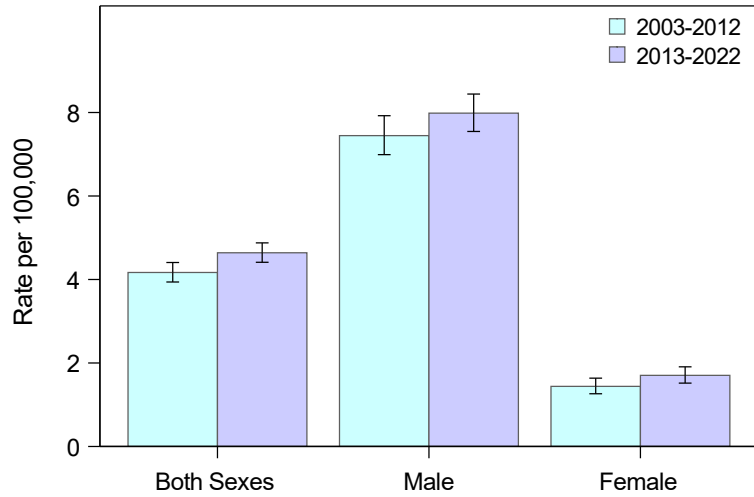
Age-Specific Incidence Rates



Rates are per 100,000 population. Age-adjusted rates calculated using the 2000 U.S. Standard Population.
 Suggested citation: Kansas Cancer Registry, Smoking-Associated Cancers, 2003-2022

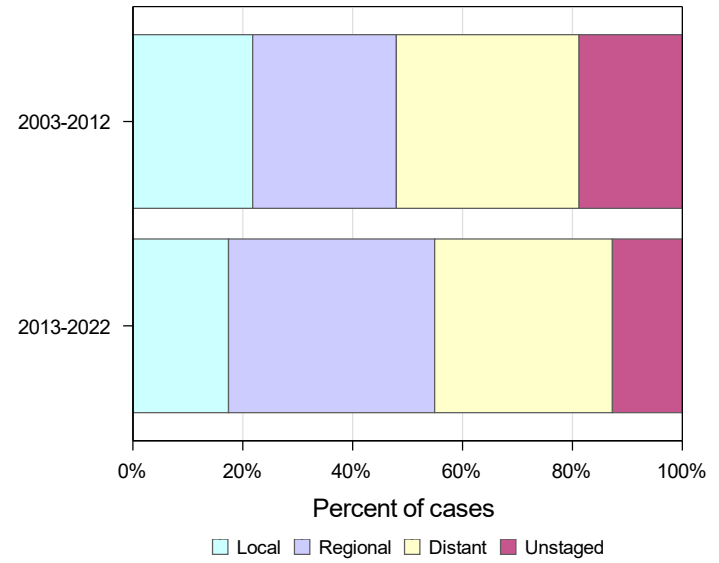
Invasive Esophagus Cancer in Kansas, 2003-2022

Age-Adjusted Incidence Rates by Sex

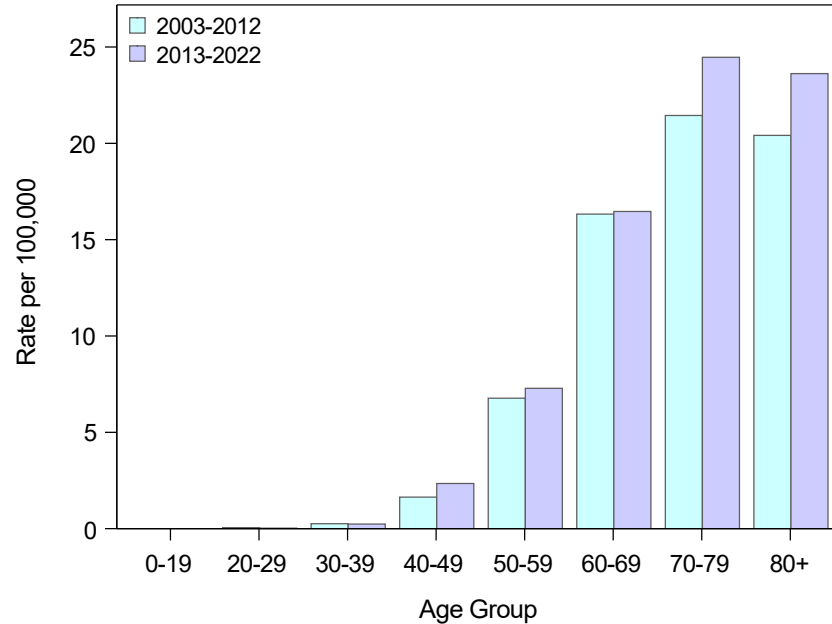


| | Both Sexes | Male | Female |
|----------------------------|------------|------|--------|
| Avg Annual Count 2003-2012 | 158 | 128 | 31 |
| Avg Annual Count 2013-2022 | 203 | 163 | 40 |

Stage at Diagnosis



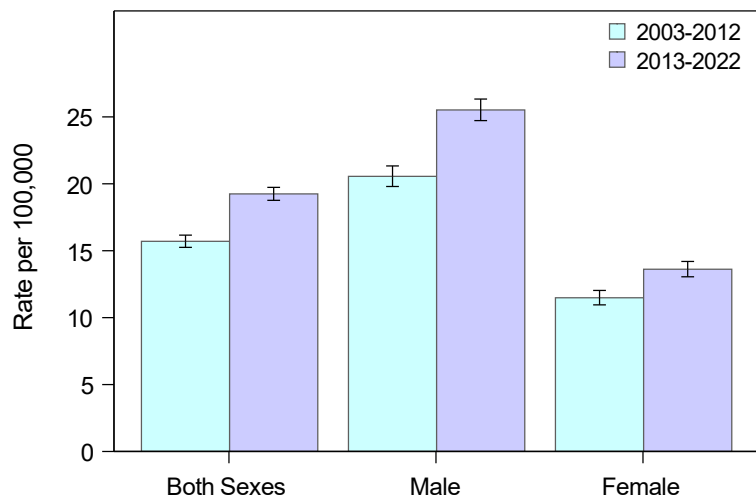
Age-Specific Incidence Rates



Rates are per 100,000 population. Age-adjusted rates calculated using the 2000 U.S. Standard Population.
Suggested citation: Kansas Cancer Registry, Smoking-Associated Cancers, 2003-2022

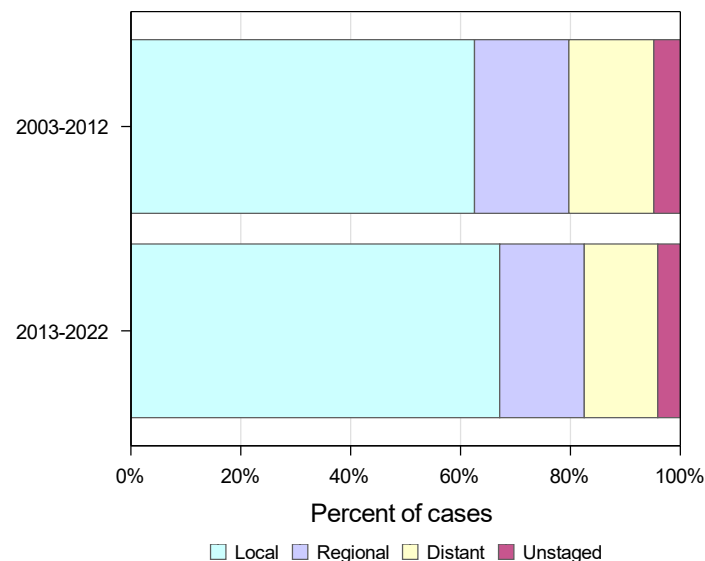
Invasive Kidney and Renal Pelvis Cancer in Kansas, 2003-2022

Age-Adjusted Incidence Rates by Sex

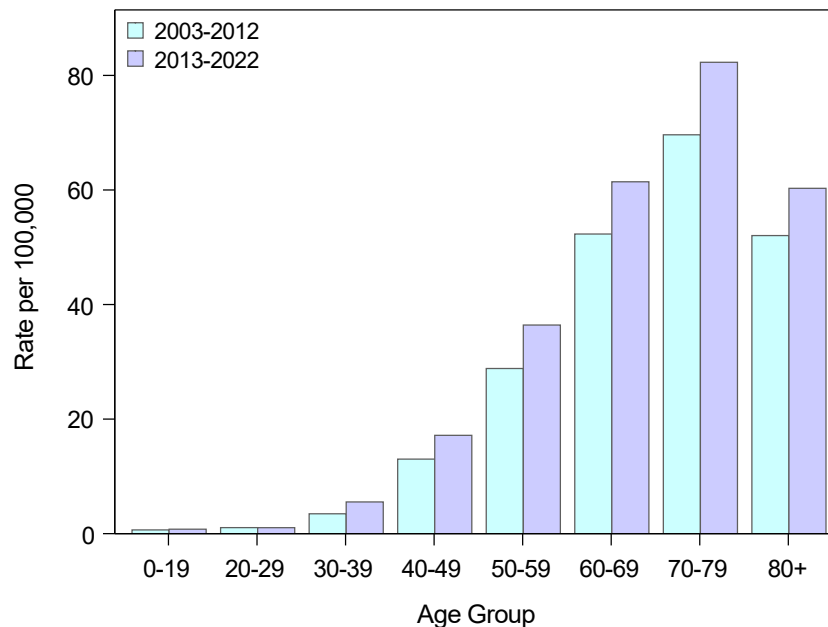


| | Both Sexes | Male | Female |
|----------------------------|------------|------|--------|
| Avg Annual Count 2003-2012 | 583 | 356 | 227 |
| Avg Annual Count 2013-2022 | 810 | 515 | 295 |

Stage at Diagnosis



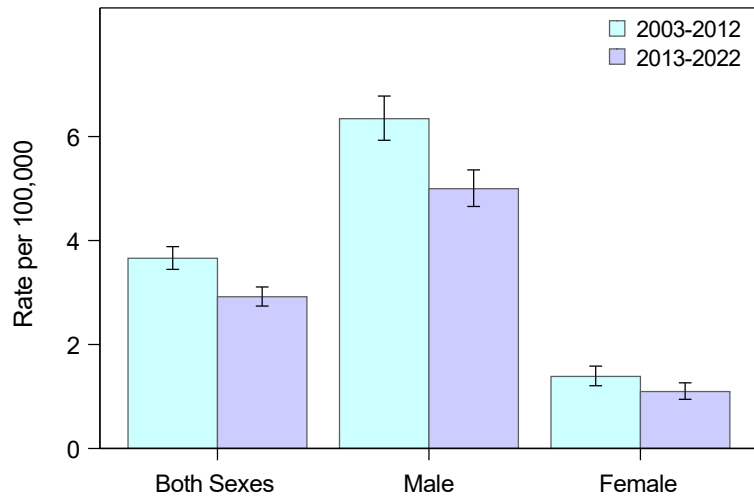
Age-Specific Incidence Rates



Rates are per 100,000 population. Age-adjusted rates calculated using the 2000 U.S. Standard Population.
Suggested citation: Kansas Cancer Registry, Smoking-Associated Cancers, 2003-2022

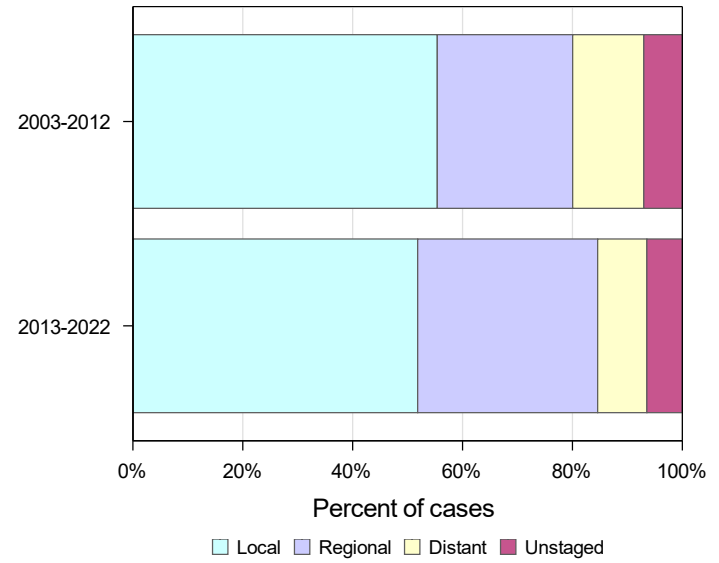
Invasive Larynx Cancer in Kansas, 2003-2022

Age-Adjusted Incidence Rates by Sex

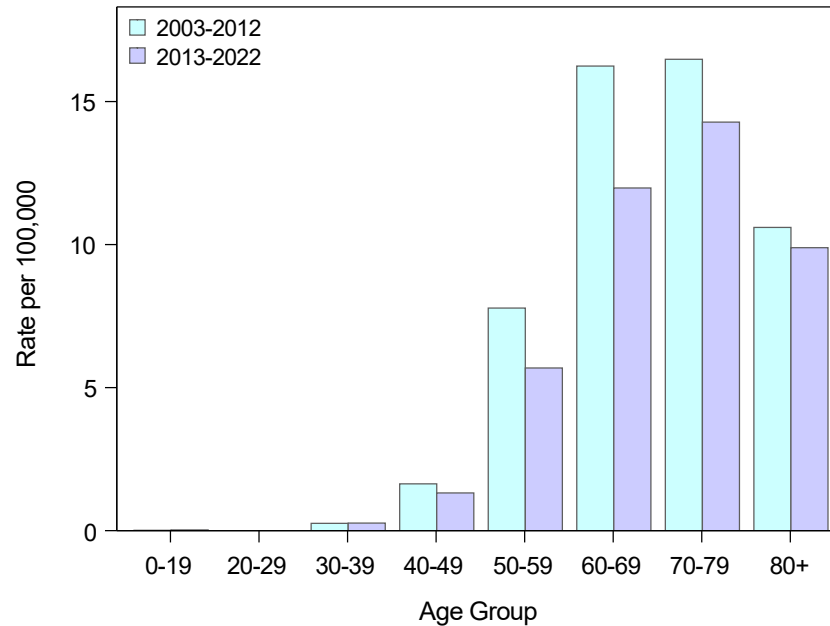


| | Both Sexes | Male | Female |
|----------------------------|------------|------|--------|
| Avg Annual Count 2003-2012 | 139 | 112 | 28 |
| Avg Annual Count 2013-2022 | 130 | 104 | 25 |

Stage at Diagnosis



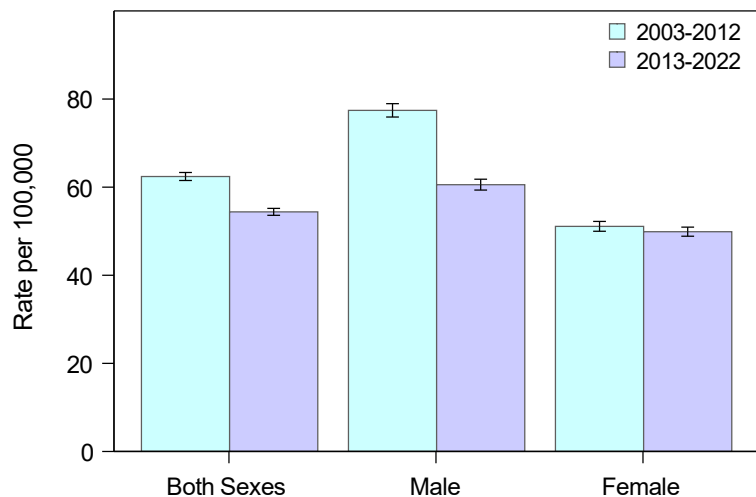
Age-Specific Incidence Rates



Rates are per 100,000 population. Age-adjusted rates calculated using the 2000 U.S. Standard Population.
Suggested citation: Kansas Cancer Registry, Smoking-Associated Cancers, 2003-2022

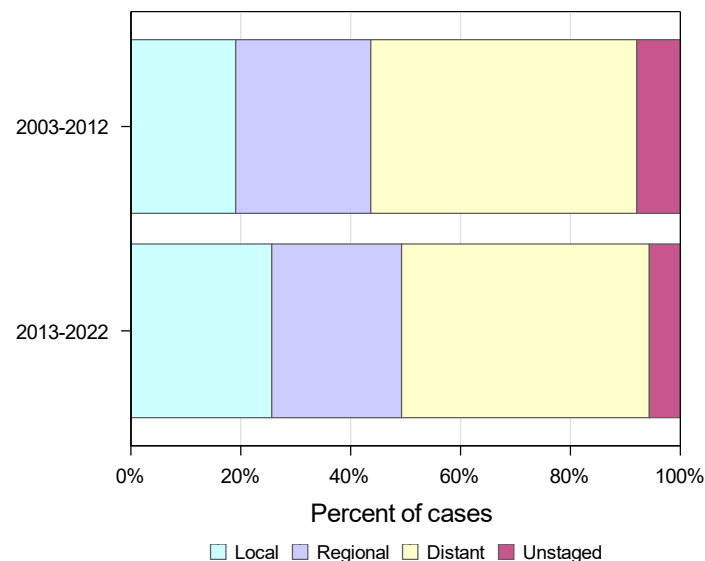
Invasive Lung and Bronchus Cancer in Kansas, 2003-2022

Age-Adjusted Incidence Rates by Sex

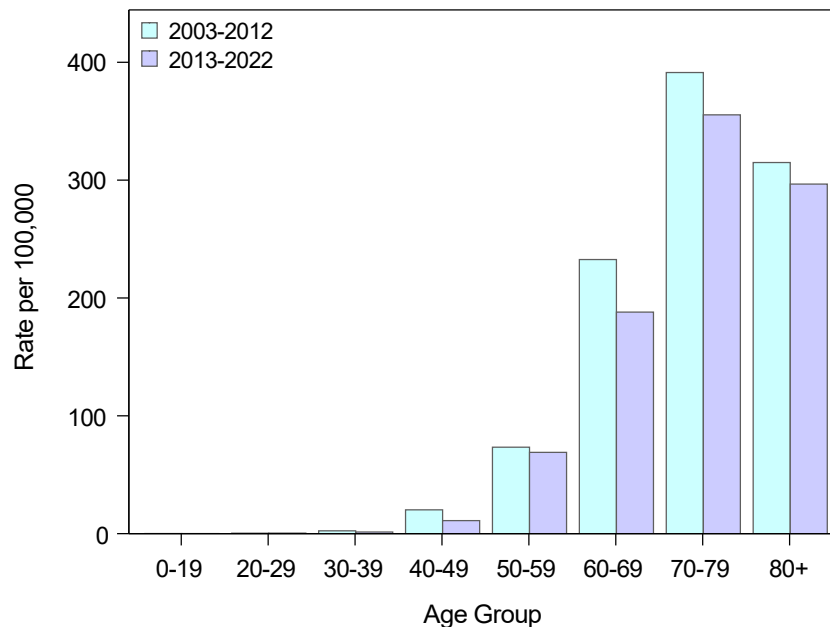


| | Both Sexes | Male | Female |
|----------------------------|------------|-------|--------|
| Avg Annual Count 2003-2012 | 2,326 | 1,288 | 1,038 |
| Avg Annual Count 2013-2022 | 2,400 | 1,225 | 1,174 |

Stage at Diagnosis



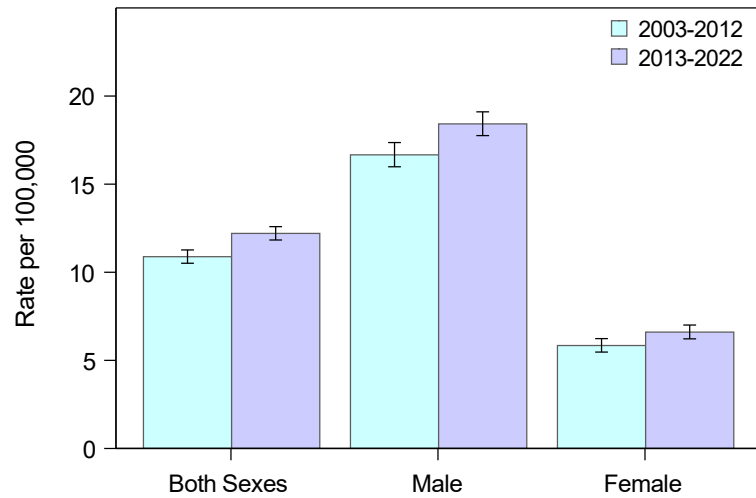
Age-Specific Incidence Rates



Rates are per 100,000 population. Age-adjusted rates calculated using the 2000 U.S. Standard Population.
Suggested citation: Kansas Cancer Registry, Smoking-Associated Cancers, 2003-2022

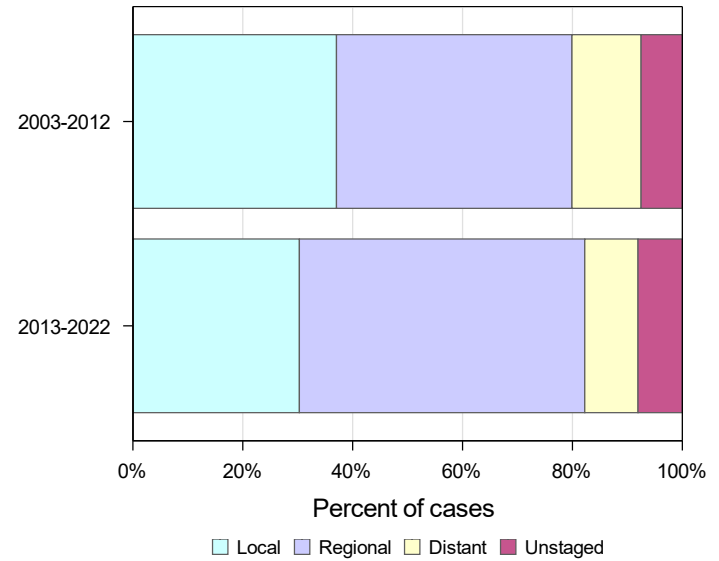
Invasive Oral Cavity and Pharynx Cancer in Kansas, 2003-2022

Age-Adjusted Incidence Rates by Sex

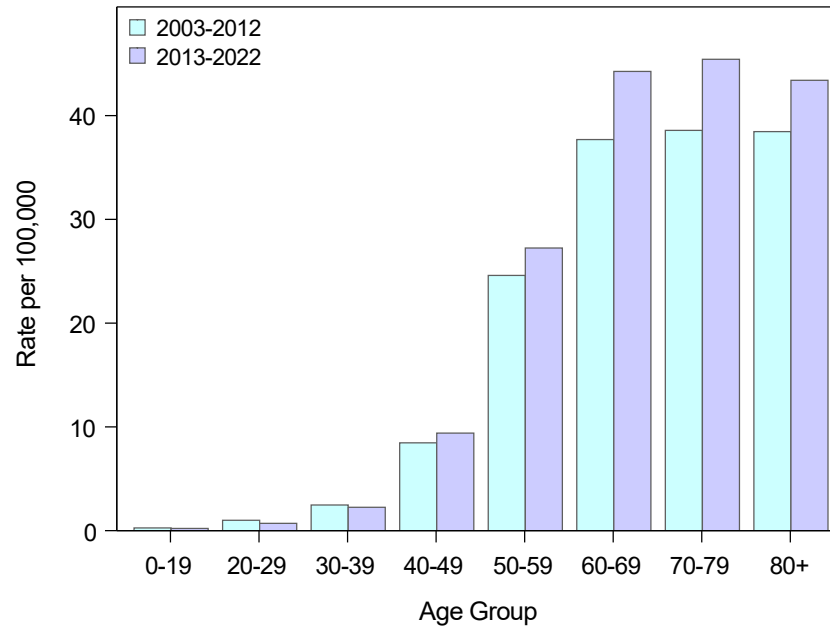


| | | | |
|-------------------------------|-----|-----|-----|
| Avg Annual Count 2003-2012 | 411 | 293 | 118 |
| Avg Annual Count 2013-2022 | 531 | 383 | 148 |

Stage at Diagnosis



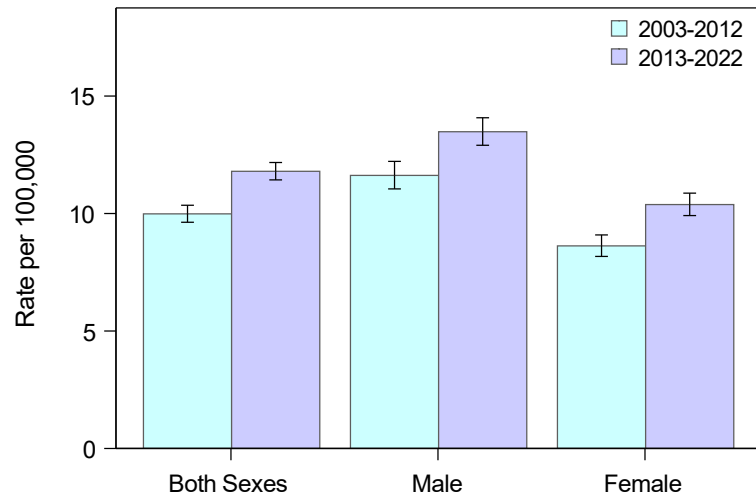
Age-Specific Incidence Rates



Rates are per 100,000 population. Age-adjusted rates calculated using the 2000 U.S. Standard Population.
Suggested citation: Kansas Cancer Registry, Smoking-Associated Cancers, 2003-2022

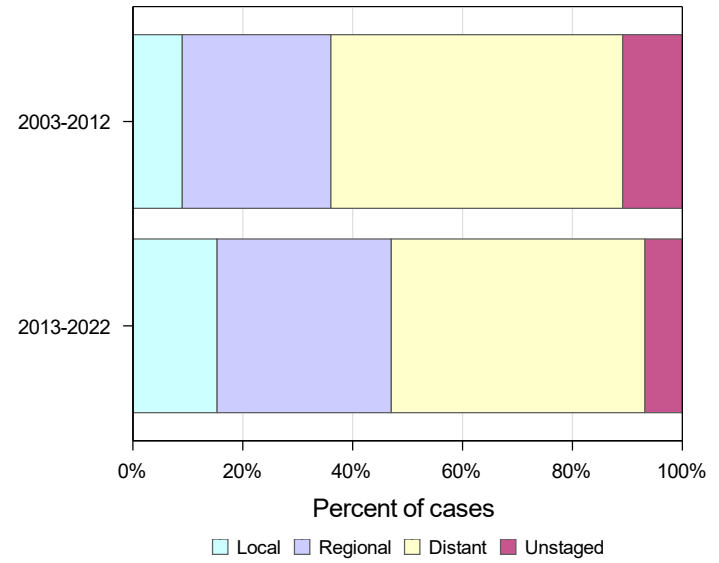
Invasive Pancreas Cancer in Kansas, 2003-2022

Age-Adjusted Incidence Rates by Sex

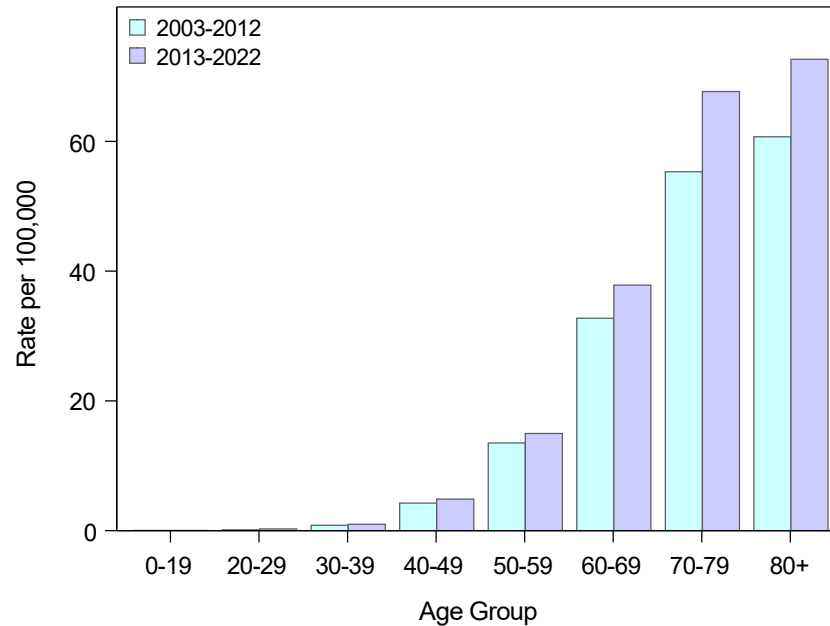


| | Both Sexes | Male | Female |
|----------------------------|------------|------|--------|
| Avg Annual Count 2003-2012 | 375 | 196 | 179 |
| Avg Annual Count 2013-2022 | 514 | 271 | 243 |

Stage at Diagnosis



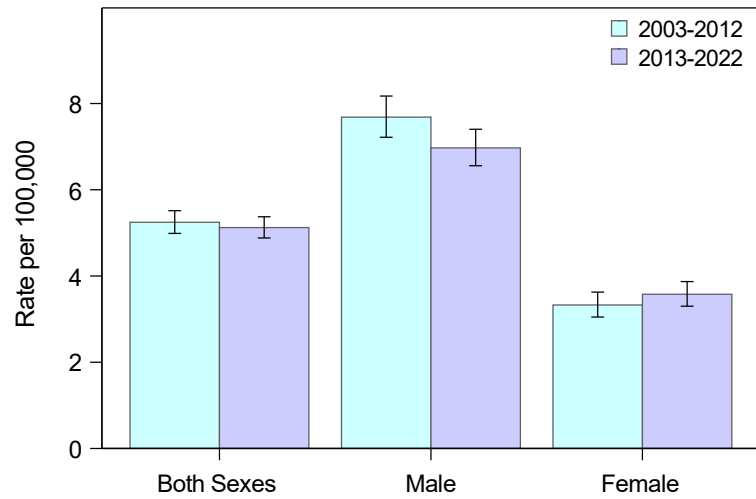
Age-Specific Incidence Rates



Rates are per 100,000 population. Age-adjusted rates calculated using the 2000 U.S. Standard Population.
Suggested citation: Kansas Cancer Registry, Smoking-Associated Cancers, 2003-2022

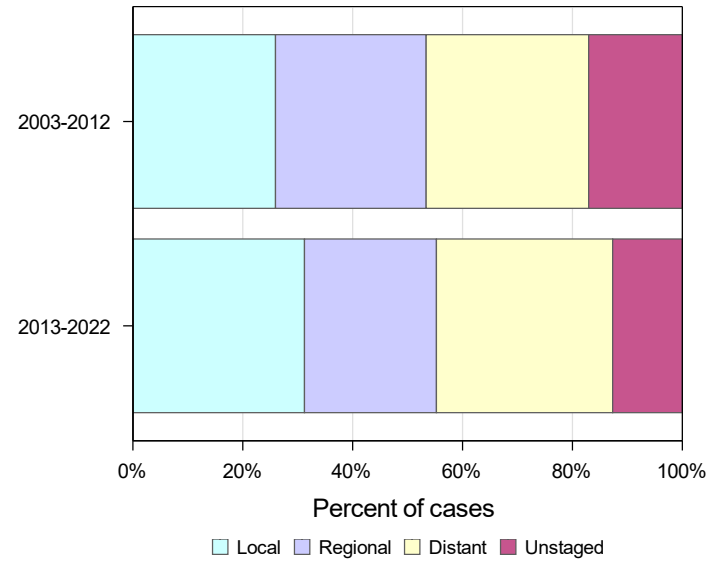
Invasive Stomach Cancer in Kansas, 2003-2022

Age-Adjusted Incidence Rates by Sex

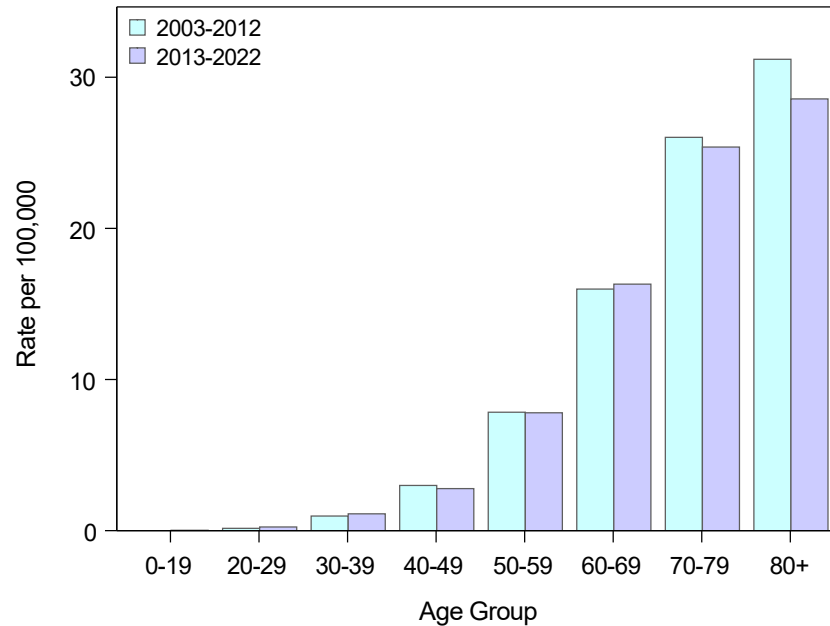


| | Both Sexes | Male | Female |
|----------------------------|------------|------|--------|
| Avg Annual Count 2003-2012 | 197 | 129 | 68 |
| Avg Annual Count 2013-2022 | 222 | 140 | 82 |

Stage at Diagnosis



Age-Specific Incidence Rates



Rates are per 100,000 population. Age-adjusted rates calculated using the 2000 U.S. Standard Population.
Suggested citation: Kansas Cancer Registry, Smoking-Associated Cancers, 2003-2022